



TAKE A DIFFERENT ROAD

THE NEW  
**LANCER**



## A LASTING IMPRESSION

This is the all-new Mitsubishi Lancer, a sports saloon whose stunning looks are only exceeded by the fabulous driving experience it offers. Inspired by years of success in the world's top-level rallies, Lancer has been designed to thrive in the most demanding environment of all: the real world

outside your door. That is why we also made it comfortable and spacious, and then provided it with an outstanding level of standard equipment. The result is a car that works for you, every day and in every way.





## THE PERFECT PEDIGREE

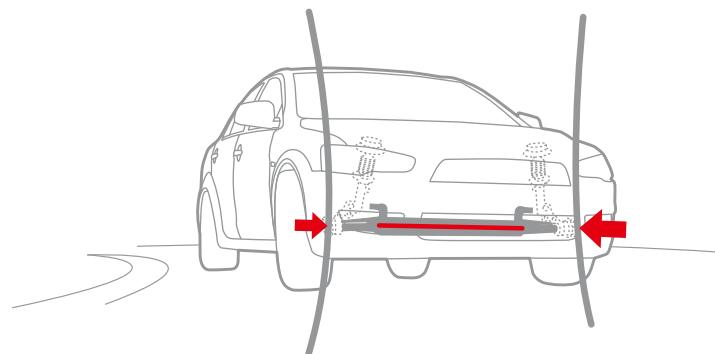
The new Lancer offers the perfect combination: a truly beautiful body clothing a structure that is as strong as they come. Making cars this strong is in our blood, and for 35 years we have been competing with Lancer at the very top level in the most punishing motor sport arena of them all: world rallying. Our cars have triumphed through being very fast and unfailingly reliable; something only achievable through the highest possible standards of engineering. Since 1973, eight generations of Lancer have been defined by this approach, as have nine versions of the legendary Lancer Evolution. New Lancer moves the game on once again.





## AT THE CUTTING EDGE

One look at Lancer tells you all you need to know: here is a sports saloon that will stand out in any crowd and say all the right things about its owner. It is so sporty and dynamic, it looks like it is moving even when parked. And it's as good to drive as it is to look at, thanks to truly sporting performance and finely developed handling. Add to this a cabin of exceptional quality and comfort, together with the Mitsubishi Motors reliability you can take for granted, and it is clear to see how every promise made by Lancer's appearance is kept in full.



**RIGID BODY AND SUBFRAMES**



#### **FIRM FOUNDATIONS**

New Lancer is built around an all-new and ultra-rigid body with sophisticated 4-wheel independent suspension – essential foundations for a sporting car. A flat front subframe that resists bending and brand-new multi-link rear suspension guarantee great handling with no compromise in ride comfort, keeping the new Lancer glued to the road and the smile glued to your face.



**SPORT-TUNED SUSPENSION**



## CONTROL AT YOUR FINGERTIPS

At Mitsubishi Motors, we understand that power is nothing without the ability to control it. That is why we have created a driving environment for Lancer where everything is where you expect and operates how you expect. You are in total command at all times, with all the information you need at your fingertips which, in the GS4 model, includes guidance from the advanced touch-screen navigation system with hard-disc drive.



#### IN TOTAL COMMAND

Lancer gives you cruise control and radio controls on the steering wheel, meaning you hardly have to lift a finger. A central display in the clear, attractive instruments beyond provides a range of useful driving information, all accessed by pressing a button conveniently positioned on the dashboard.





## DESIGNED FOR YOU

The Mitsubishi Lancer is one car that does not make you choose between substance and style. Beneath those sleek good looks lies a spacious cabin with room to spare for five adults. Up front the tight curve of the dashboard creates a sense of space, while at the back the huge boot with 60/40 split folding rear seat backrests provides all the carrying capacity and flexible loadspace you need for you and your family. Interior materials have been chosen to look good yet prove durable through years of ownership.



### CLEVER STORAGE

You will be forgiven for wanting to spend plenty of time inside the new Lancer. So we have provided plenty of handy areas to help keep the interior tidy and free of clutter. The front armrest incorporates a storage box; the rear armrest, two cupholders. And there is additional storage in all four doors and the centre console.





## A GREAT NOSE FOR DESIGN

Lancer has been styled to look great from every angle – its appearance matches perfectly its sporty nature and the thrilling drive it offers. At the front the shark-like nose and deep set eyes will pull attention from every pavement, as will the long hood with its jet-fighter inspired front grille. These features blend seamlessly into the high-waisted side, through the narrow window line and then into the trunk which has been styled to accentuate the Lancer's wedge-shaped profile, providing a strong impression of movement.

Viewed from any direction, Lancer is broad-chested, low slung and muscular. There is nothing superfluous, no design for design's sake, just an extremely purposeful and attractive car that looks born for the open road.

#### TAKE A CLOSER LOOK

The rear lights are skilfully integrated into the overall shape of the car and the bulging wheelarches further signal the car's sporting character.



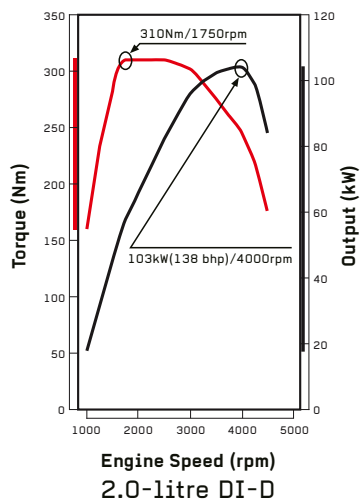
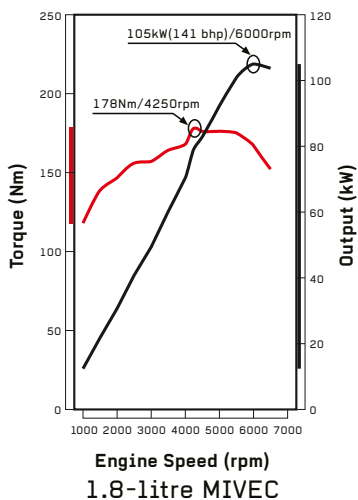


## PERFORMANCE IS IN OUR DNA

When Mitsubishi Motors makes a car look this athletic you can be sure it has also provided a perfectly matched range of engines and gearboxes. Diesel lovers will enjoy the powerful yet economical 2-litre DI-D engine with 138 bhp and six expertly-judged gear ratios.

Those who prefer petrol will be attracted by our punchy 141 bhp 1.8-litre MIVEC motor, which can be paired with either a slick-shifting 5-speed manual transmission or a responsive CVT automatic which comes with Sports Mode manual shift over-ride.





**ALL-ROUND PERFORMANCE**

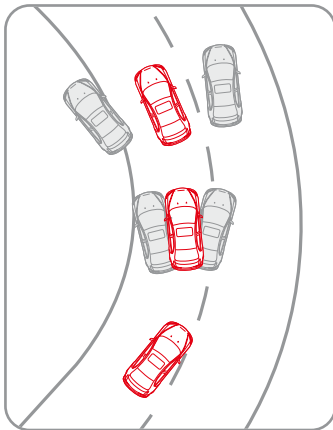
Naturally both engines offer highly competitive economy and emissions, while Lancer's all-new super-stiff chassis works brilliantly with state of the art multi-link rear suspension to guarantee the Lancer is every bit as rewarding and impressive in the corners as on the straights. And stylish 18" alloy wheels and sports suspension guarantee the ultimate in handling response.



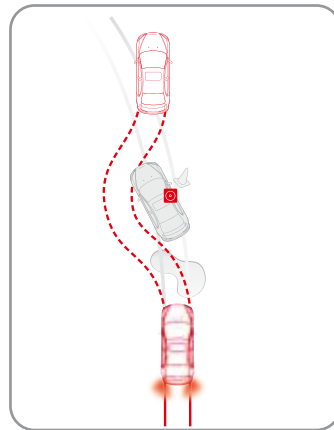
## PROTECT AND SERVE

The Mitsubishi Motors safety philosophy is to design its cars to help keep you out of trouble whatever the conditions and then, if anything should happen, offer you and your family the maximum possible protection.

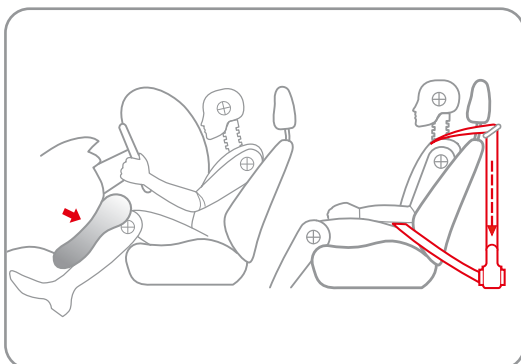
This is why Lancer comes with a complete suite of active safety systems, from its excellent dynamics and outstandingly strong disc brakes to Mitsubishi's Active Stability and Traction Control (M-ASTC) and ABS with Electronic Brake-force Distribution (EBD).



M-ASTC



ABS & EBD



In the event of a collision, you will be looked after by seven airbags, including one for the driver's knees, which significantly reduces the risk of a lower limb injury. Front seatbelts with pretensioners and force-limiters provide greater restraint yet transfer fewer impact forces to occupants. Further protection is provided by Lancer's structure – built around Reinforced Impact Safety Evolution (RISE) technology.



### SOUND DESIGN

The solid ergonomic design found elsewhere in Lancer's cabin extends to the GS3 model's audio system which is mounted high on the dashboard to help minimise distraction while driving, and at night its soft red illumination complements that of the instrument panel and air conditioning controls. The CD player will accept MP3 format discs and six carefully positioned speakers ensure your listening pleasure.



## THE POWER THAT LIES WITHIN

An ultra-high-tech, touch-screen navigation system dominates the Lancer GS4 model's dashboard. Behind the 7" colour display is a 30GB hard drive which provides ultra-fast location search and route-finding capabilities. It also acts as a music server, storing up to two thousand songs for you to enjoy whenever you like, and even incorporates a CDDB (CD Database) to relay information about the CD being played to the screen. Further versatility is offered by an auxiliary socket which allows you to plug in an iPod®/MP3 player.

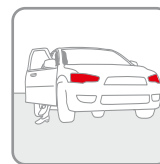


### ETACS, YOUR PERSONALISED ASSISTANT

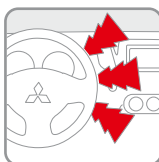
Mitsubishi Motors' customizable Electronic Total Automobile Control System (ETACS) allows you to personalize the operation of a wide range of features for added safety, comfort and convenience. In the Lancer GS4 model, certain ETACS comfort functions can be customized via the touch-screen; your Mitsubishi Motors dealer can personalize such functions for the GS3.



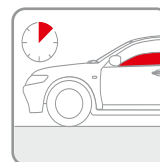
**KEYLESS ENTRY SYSTEM**  
Makes it possible to lock and unlock the doors and boot lid, and to close the windows with the remote key.



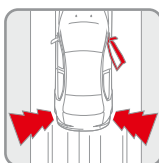
**HEADLAMP AUTO-OFF FUNCTION**  
After you have turned off the ignition and got out of the car, the headlamps are automatically switched off, preventing the battery from being drained.



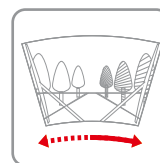
**INDICATOR WITH COMFORT MODE**  
When the indicator lever is tapped briefly, the indicator will flash three times and then stop – allowing you to concentrate on manoeuvring and therefore making driving easier and safer.



**POWER WINDOW TIMER**  
After taking the key from the ignition, the windows may still be opened and closed from inside for up to 30 seconds.



**OPEN DOOR ALARM**  
If any door is still open while the car is moving, a buzzer will alert you.



**SPEED SENSITIVE WIPERS**  
When the front wipers are set to intermittent, a speed sensor changes the wiper interval to suit the car's speed for better visibility.

For a complete list of ETACS functions, please consult your Mitsubishi Motors dealer or refer to the owner's manual.



## GET FURTHER INSPIRED!

At Mitsubishi Motors, we know how discerning our customers are and that however well equipped the new Lancer is, many will want to tailor the car further to meet their specific needs. So, we have prepared an extensive range of accessories to cater for all requirements.



1. Mirror covers, carbon look
2. Tailgate garnish, rear bumper protection foil and rear airdam
3. B-pillar decoration foil, carbon look
4. Mirror covers, alloy brushed look
5. Side airdam foil, silver colour
6. Silver interior decoration kits, gearshift knob and handbrake lever (both alloy with black leather)

The rear spoiler inlays shown opposite are also available as accessories.

For the full range of accessory items, please ask your dealer for the Lancer Accessories brochure.



## LANCER GS3

1.8 MIVEC Manual/CVT Automatic  
2.0 DI-D Manual

### Key features

- Alarm system with keyless entry
- ABS with EBD
- Mitsubishi Active Stability and Traction Control (M-ASTC)
- Dual front, side, curtain and driver's knee airbags
- 18" alloy wheels
- Front fog lamps
- Front and side airdam extensions
- Rear spoiler
- Colour-keyed door handles and mirrors
- Privacy glass
- Climate control air conditioning
- Front and rear electric windows
- Electric heated and folding door mirrors
- Cruise control
- Leather steering wheel with remote audio/cruise controls
- Radio with CD player (MP3 compatible) and 6 speakers



## LANCER GS4

1.8 MIVEC Manual/CVT Automatic  
2.0 DI-D Manual

### Key features

#### SPECIFICATION AS 1.8 PLUS:

- Leather faced seats
- Heated front seats
- HDD satellite navigation system incorporating music server
- iPod®/MP3 auxiliary input



# TECHNICAL SPECIFICATIONS

Model		Lancer 1.8 MIVEC Manual	Lancer 1.8 MIVEC CVT Automatic	Lancer 2.0 DI-D Manual
<b>Engine</b>		In-line 4-cylinder 16-valve DOHC petrol engine, MIVEC variable valve timing		In-line 4-cylinder 16-valve DOHC diesel engine, turbocharger with intercooler
Engine type				Electronically controlled direct injection fuel pump
Fuel system		Electronically controlled multi-point injection (ECI-MULTI)		
Displacement	cc	1798	1798	1968
Bore/stroke	mm	86.0 x 77.4	86.0 x 77.4	81.0 x 95.5
Compression ratio		10.5	10.5	18.0
Max. output	kw (bhp) at rpm	105 (141)/6000	105 (141)/6000	103 (138)/4000
Max. torque	Nm (lb.ft) at rpm	178 (131)/4250	178 (131)/4250	310 (228)/1750
<b>Performance/Fuel Consumption/Emissions</b>				
Maximum speed	mph (kph)	127 (204)	119 (192)	129 (207)
Acceleration 0-62 mph	secs	9.8	11.2	9.7
Fuel type		Unleaded	Unleaded	Diesel
Fuel consumption	Urban mode	10.4 (27.2)	10.9 (25.9)	8.3 (34.0) <8.5 (33.2)>
lts/100km (mpg)	Extra urban mode	6.1 (46.3)	6.2 (45.6)	5.1 (55.4) <5.2 (54.3)>
	Combined mode	7.7 (36.7)	7.9 (35.8)	6.3 (44.8) <6.4 (44.1)>
CO <sub>2</sub> emissions	g/km	183	188	165 <169>
<b>Suspension and Steering</b>		MacPherson strut, coil springs, telescopic shock absorbers, stabiliser bar. Front strut brace		
Front axle		Multi-link, coil springs, telescopic shock absorbers, stabiliser bar		
Rear axle		Anti-lock Braking System with Electronic Brake-force Distribution (ABS + EBD)		
Brakes		276mm (10.9") ventilated disc		
	Front	262mm (10.3") solid disc with internal drum handbrake		
	Rear	Rack and pinion, power-assisted		
Steering				
Tyres		215/45R18 89W	215/45R18 89W	215/45R18 89W
Wheels		18" x 7.0JJ Alloy	18" x 7.0JJ Alloy	18" x 7.0JJ Alloy
<b>Driveline/Transmission</b>		Front transverse engine/front wheel drive		
Type				
Clutch	Manual	Hydraulic	-	Hydraulic
	Automatic	-	INVECS-III CVT with Sports Mode	-
Transmission	Manual	5-speed	-	6-speed
	Automatic	-	[6-speed]	-
Gear ratios	D range	-	2.349 - 0.394	-
	1st	3.538	[2.349]	3.538
	2nd	1.913	[1.397]	2.045
	3rd	1.333	[1.074]	1.290
	4th	1.028	[0.832]	0.880
	5th	0.820	[0.631]	0.809
	6th	-	[0.518]	0.673
	Reverse	3.583	1.750	3.831
Final gear ratio	1st-4th	4.235	6.120	4.058
	5th-6th, Reverse	4.235	6.120	3.450
<b>Dimensions</b>				
Exterior l x w x h	mm	4570 x 1760 x 1490	4570 x 1760 x 1490	4570 x 1760 x 1490
Ground clearance (unladen)	mm	150	150	150
Track Front	mm	1530	1530	1530
Rear	mm	1530	1530	1530
Wheelbase	mm	2635	2635	2635
<b>Weights/Volumes</b>				
Seating capacity		5	5	5
Fuel tank capacity	lts (imp.galls)	59 (13.0)	59 (13.0)	59 (13.0)
Gross vehicle weight	kg (lbs)	1850 (4079)	1850 (4079)	1920 (4233)
Kerb weight	kg (lbs)	1350 (2976)	1380 (3042)	1450 (3197)
Towing capacity, braked	kg (lbs)	1300 (2866)	1300 (2866)	1400 (3086)
Trailer nose weight	kg (lbs)	55 (121)	55 (121)	70 (154)
Roof loading capacity	kg (lbs)	80 (176)	80 (176)	80 (176)
<b>Service/Insurance/Warranty</b>		Every 12,500 miles or 12 months, whichever occurs first		
Service intervals		GS3 : 8E / GS4 : 9E		
Insurance group				
Warranty		3 year unlimited mileage warranty, 12 year anti-corrosion perforation warranty, 3 year pan-European roadside, home and accident assistance		

[ ] Gear ratios when operating in Sports Mode < > Fuel consumption and CO<sub>2</sub> figures when fitted with DPF (Diesel Particulate Filter)

## STANDARD AND OPTIONAL EQUIPMENT

Model	Lancer GS3	Lancer GS4
<b>Security and Safety Features</b>		
<b>Security</b>		
Alarm/keyless entry	■	■
Door deadlocks	■	■
Engine immobiliser	■	■
Locking wheel nuts	■	■
Visible VIN	■	■
<b>Safety</b>		
ABS with EBD	■	■
Airbags SRS, driver's and front passenger's, two-stage inflation	■	■
Airbag SRS, driver's knee protection	■	■
Airbag SRS, front passenger's deactivation switch	■	■
Airbags SRS, front seat side and curtain	■	■
Child proof rear door locks	■	■
Disc brakes, ventilated front, solid rear	■	■
Electric windows, anti-trapping, front and rear	■	■
Fog lamp, rear	■	■
High-mount stop lamp, rear	■	■
ISO-Fix child seat mounting x 2, rear	■	■
Mitsubishi Active Stability & Traction Control (M-ASTC)	■	■
Seatbelts, ELR 3-point x 2 with pretensioners & force limiters, front	■	■
Seatbelts, ELR 3-point x 3, rear	■	■
Tether anchor x 3	■	■
<b>Exterior features</b>		
<b>Styling</b>		
18" alloy wheels, 10-spoke	■	■
Airdam, front, colour-keyed	■	■
Airdams, side, colour-keyed	■	■
Belt line moulding, chrome	■	■
Bumpers, colour-keyed, front and rear	■	■
Door mirrors and handles, colour-keyed	■	■
Front grille, upper, black with chrome surround	■	■
Metallic or pearlescent paint finish	□	□
Privacy glass – rear side and rear windows	■	■
Rear spoiler, colour keyed	■	■
<b>Functional</b>		
Door mirrors, electrically adjustable, heated and foldable	■	■
Fog lamps, front	■	■
Headlamps, halogen	■	■
Remote central door locking	■	■
Spare wheel, space saver	■	■
Wipers, speed-sensitive variable intermittent with washer, front	■	■
Window demister, rear	■	■
<b>Interior features</b>		
<b>Audio/Navigation/Communications</b>		
Aerial, rear roof mounted	■	■
Audio remote controls, steering wheel mounted	■	■
Stereo radio/CD with MP3 compatibility and 6 speakers	■	-
HDD navigation/music server system with 7" touch-screen display	-	■
iPod®/MP3 auxiliary input port	-	■
<b>Styling</b>		
Carpet including luggage area, needle punch	■	■
Decoration panels, dashboard and door trim, geometric pattern	■	■
Door trim, fabric insert	■	-
Door trim, leather-look insert	-	■
Door handles, inner, chrome	■	■
Gear knob, leather-wrapped, black	■	■
Seat trim, fabric	■	-
Seat trim, leather-faced, black	-	■
Steering wheel, leather-wrapped, black	■	■
<b>Convenience</b>		
Air conditioning, climate control	■	■
Bottle holder, front doors	■	■
Coat hanger	■	■
Cruise control	■	■
Cup holders, front	■	■
Door pockets, front and rear	■	■
Front seat backrest pocket, passenger's side	■	■
Footrest, driver's	■	■
Glove box	■	■
Pollen filter	■	■
Retractable assist grips x4	■	■
Seat belt, warning buzzer	■	■
Seat heaters, front	-	■
Sunvisor with ticket holder, driver's side and vanity mirror passenger's side	■	■
Tachometer	■	■

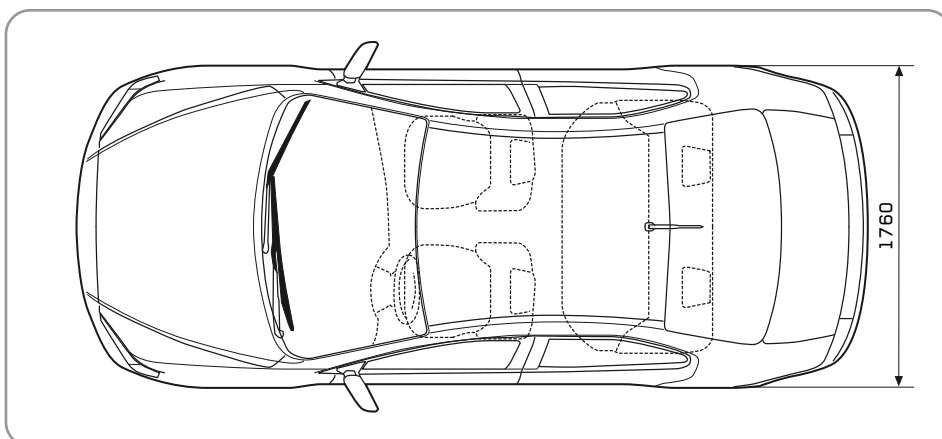
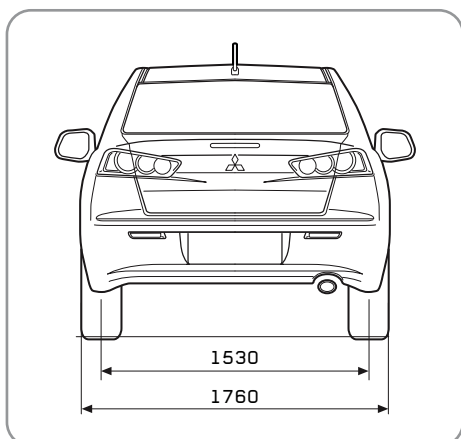
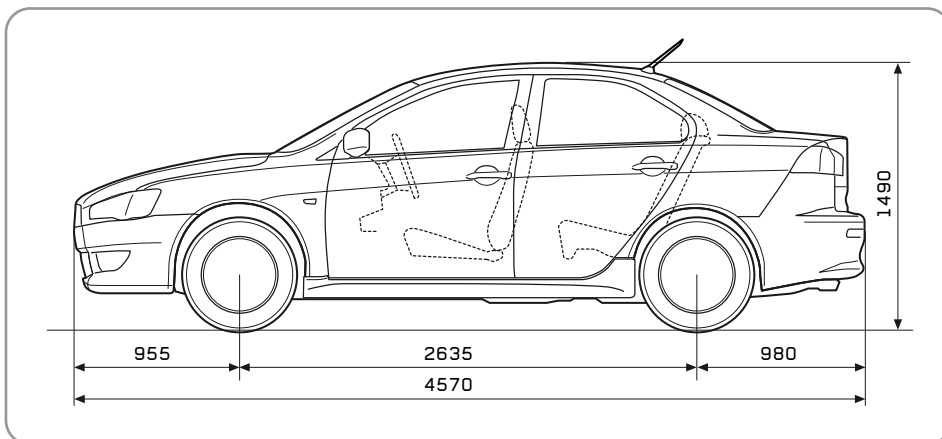
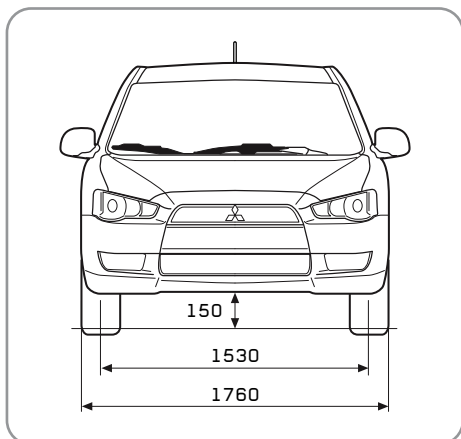
■ : Standard □ : Option at additional cost - : Not available

Model	Lancer GS3	Lancer GS4
<b>Interior features continued</b>		
<b>Functional</b>		
Accessory socket, front console	■	■
Average fuel consumption display	■	■
Average speed display	■	■
Door mirrors, electrically adjustable, heated and foldable	■	■
Electric windows with one-touch open/close, front	■	■
Electric windows with one-touch open/close, rear	■	■
Fuel range indicator	■	■
Headlamp levelling device	■	■
Instrument panel light dimmer	■	■
Multi-information monitor (in instrument panel)	■	■
Remote boot lid release, electronic	■	■
Remote fuel lid release	■	■
Steering wheel, tilt-adjustable	■	■
<b>Lighting</b>		
Interior lamp, front	■	■
Interior lamp, rear	■	■
Luggage/cargo area lamp	■	■
Map reading lamps, front	■	■
<b>Seats</b>		
Armrest, front centre with storage box	■	■
Armrest, rear centre with cup holders	■	■
Driver's seat height adjustment	■	■
Head restraints, front – height adjustable x 2	■	■
Head restraints, rear – height adjustable x 3	■	■
Rear seats with 60/40 split folding backrests	■	■

■ : Standard   □ : Option at additional cost   - : Not available

## DIMENSIONAL VIEWS

### EXTERIOR DIMENSIONS



All measurements in millimetres.

## COLOUR OPTIONS



1  
COOL SILVER (M)



2  
STONE GREY (P)



3  
ORIENT RED (M)



4  
THUNDER BLUE (P)



5  
AMETHYST BLACK (P)



6  
FROST WHITE (S)



- 1 Black fabric with pin-dotted pattern and suede-like knit (GS3)  
2 Black Leather (GS4)

■ : Available M: Metallic\* P: Pearlescent\* S: Solid  
\*Metallic/pearlescent paint finish available at additional cost.

Model	LANCER	
	GS3	GS4
<b>Exterior colour</b>		
1 Cool Silver (M) A31	■	■
2 Stone Grey (P) A39	■	■
3 Orient Red (M) P26	■	■
4 Thunder Blue (P) T65	■	■
5 Amethyst Black (P) X42	■	■
6 Frost White (S) W37	■	■
<b>Seats</b>	Fabric (Black)	Leather-faced (Black)
<b>Door trim</b>	Formed-type with Fabric Insert (Black)	Formed-type with Leather-look Insert (Black)
<b>Headlining</b>	Non-woven Fabric (Light Grey)	
<b>Floor carpet</b>	Needle Punch (Black)	

Colours and trims reproduced on these pages may vary from the actual colours due to the limitations of the printing process used.

## OUTSTANDING AFTER SALES FOR CAREFREE MOTORING

### MITSUBISHI SERVICE PLAN

Buy a Mitsubishi Service Plan to cover the scheduled service cost for the first three services (3 years / 37,500 miles - whichever occurs first) . This will give you inflation-proof prices and peace of mind.

The Mitsubishi Service Plan is transferable to a new owner and will enhance the resale value of your vehicle. Please ask your dealer for details.

### MITSUBISHI MOTORS GENUINE PARTS

Even the smallest technical faults can lead to accidents. Therefore, all Mitsubishi Motors Genuine Parts have been developed and tested to stringent quality standards. We recommend using Mitsubishi Motors Genuine Parts in order to maintain the safety and integrity of your vehicle and that of your passengers. Mitsubishi Motors Genuine Parts are available at all Mitsubishi Authorized Service Points.

### COMPREHENSIVE WARRANTY

All new Mitsubishi Lancer vehicles come standard with a comprehensive 3-year unlimited mileage warranty as standard. The anti-corrosion perforation warranty covers rusting through for the first 12 years. The reliability statistics for Mitsubishi vehicles are impressive, but in the unlikely event that you do need help, we offer MAP.

## MITSUBISHI MOTORS RECYCLING

We all have a duty to protect the environment. After a long working life we will take back any Mitsubishi Motors vehicle originally sold by The Colt Car Company Ltd. and recycle it in an environmentally friendly manner in accordance with the EU Directive on End-of-Life Vehicles and any applicable national statutory provisions.

All Mitsubishi Motors vehicles sold by The Colt Car Company Ltd., irrespective of date of sale, will be taken back free of charge from the last owner at one of the designated take-back points, provided the vehicle contains all major components and is free of waste.

For further information please visit [www.cartakeback.com](http://www.cartakeback.com), email [info@cartakeback.com](mailto:info@cartakeback.com) or call the Cartakeback info-line on 0845 257 32 33.

### MAP – FREE BREAKDOWN ASSISTANCE



Throughout the 3-year warranty period your vehicle is covered by Mitsubishi Motors Assistance Package (MAP) roadside assistance. This cover extends to more than 30 countries throughout Europe so your mobility is guaranteed. Should you ever need assistance in the event of breakdown, accident, theft or vandalism – wherever you are, 24 hours a day, 7 days a week – just call the number on your card.

If the problem cannot be fixed on the spot, your car will be taken to the nearest Mitsubishi Authorised Service Point and you'll be offered services such as a hotel, continuation of journey or a replacement car.



Specifications and warranty conditions may vary for overseas markets. For personal export, NATO or diplomatic sales, please contact the appropriate Export Department as follows:  
U.K.: The Diplomatic and Export Manager at The Colt Car Company Ltd., Watermoor, Cirencester, Glos. GL7 1LF. Tel: 08452 414777. Germany: The Colt Car Company Ltd., P.O. Box 1244, 41374 Brüggen, Germany. Tel: +49 2163 7036.

The specification of the vehicles illustrated in this publication may not be applicable to the UK market, furthermore some vehicle illustrations may include accessory items which are not part of standard UK specification. However, every effort has been made to ensure that the written information was accurate, up-to-date and consistent with UK specification at the time of going to press. The right is reserved to change specification, features and prices without prior notice. To avoid any misunderstandings, your Mitsubishi Motors dealer will advise of any alterations made since the date of issue of this brochure. No part of this publication may be reproduced in any form or by any means, without the prior written permission of The Colt Car Company Limited.

Head Office: The Colt Car Company Ltd., Watermoor, Cirencester, Glos. GL7 1LF  
[www.mitsubishi-cars.co.uk](http://www.mitsubishi-cars.co.uk)

LANC5108 03/09