

RENAULT GRAND SCENIC & SCENIC



DRIVE THE CHANGE



WHO BETTER THAN RENAULT TO SERVICE YOUR RENAULT?

Your new Renault Scénic is covered by a 3-year warranty package – the first 2 years of unlimited mileage Renault manufacturer warranty, followed by a further year of cover up to 60,000 miles. Paintwork is also guaranteed for 3 years while the anti-corrosion warranty runs for 12 years. In addition, the Renault Assistance plan ensures prompt help in the UK and Northern Ireland for manufacturer defects for 36 months. For full details please refer to the Renault warranty terms and conditions, available from your Renault Dealer or from www.renault.co.uk.

SERVICE INTERVALS (EURO5)

All models 18,000 miles / 2 years

Except:

<p>12,500 miles / 2 years:</p> <ul style="list-style-type: none"> • Twingo 1.2 TCe 100 & Renaultsport 133 • Mégane Renaultsport 250 	<p>12,000 miles / 2 years:</p> <ul style="list-style-type: none"> • Wind Roadster, Modus, Grand Modus & Clio 1.2 TCe 100 & 1.6 VT 133 • Clio Renaultsport 200
<p>18,000 miles / 1 year:</p> <ul style="list-style-type: none"> • Kangoo 1.6 16V 105 (Euro4) 	
<p><small>Service required at the mileage or time interval shown, whichever is sooner.</small></p>	

ENGINES WITH OIL CONTROL SYSTEM (OCS)

- PETROL 1.2 TCe 100, 1.4 TCe 130, 2.0 TCe 180, 1.6 VT 128, 1.6 VT 133, Renaultsport 133 & 250

- All DIESEL engines

OCS monitors driving conditions that directly affect the quality of your engine oil, protecting your engine from excessive wear and possible bearing failure. Under certain conditions; low speeds, heavy traffic, door-to-door deliveries (engine turning with little distance travelled) or in high gear for long periods; sport driving, towing a caravan/trailer over 500kg (engine turning at higher revolutions), the vehicle's service interval may be shortened and you will be alerted, via the instrument panel service indicator, that a Renault Service is required earlier (refer to driver's handbook for details).

EXTENDING YOUR WARRANTIES AND COVER

Renault Extended Warranty allows you to extend your Renault Warranty up to 5 years or 80,000 miles. Renault Assistance Added Cover provides you with additional cover for incidents not covered by Renault Assistance: punctures, incorrect (or lack of) fuel, keys lost, stolen or locked inside the vehicle and incidents involving caravans or trailers.

For full information on these products please ask your Renault Dealer or log on to www.renault.co.uk and click on 'Owner Services', where you can also buy securely online.

SERVICE PLANS

When you buy a new car, you can also purchase a Fixed Price Service Plan. Prices start from just £159 and the plan covers your recommended manufacturer servicing up to 3 years or 30,000 miles, whichever comes first.* For more details ask your dealer or log on to www.renault.co.uk and click on 'Owner Services'.

* Plan only available at the time of vehicle purchase.

RENAULT ACCIDENT SUPPORT LINE - 0800 085 8005

The Renault Accident Support Line (RASL) is a dedicated service from Renault for all Renault drivers and their families, no matter what car they drive. This service is available at no cost to you, regardless of fault. RASL will deal with every aspect of your claim, from ensuring you are recovered to a Renault Approved Accident Repair Centre to dealing with all insurance companies giving you total convenience and peace of mind.

0800 085 8005 is the only number you need so please programme it into your phone and make sure that in the event of an accident you call us first and we will take care of everything.

RASL will:

- Arrange recovery of your vehicle from the scene of the accident to a Renault Approved Accident Repair Centre
- Organise the repairs at a Renault Approved Accident Repair Centre using only Renault Original Parts
- Deal with all insurance companies, both yours and the other parties'
- Provide a like for like replacement vehicle if the accident is not your fault
- Pursue the at fault party for all associated costs if the accident is not your fault
- Use the same paint as during manufacture
- Provide a 5 year repair guarantee on paint and repairs
- Ensure you do not have to pay a policy excess if the accident is not your fault
- Provide the same service for your family free of charge regardless if their car is a Renault or not
- Ensure that yours and your passengers' safety are guaranteed and your five star NCAP rating will not be compromised

FINANCE OPTIONS

There are a wide variety of ways in which the purchase of a new car can be financed. Renault Finance offers all of them, so whether you're a fleet buyer or a private buyer, Renault Finance is ideally placed to tell you which plan or combination of plans best suits your needs and circumstances.

RENAULT NETWORK SERVICES

No-one is better placed than Renault to maintain, fit and repair your Renault, fast. The Renault Minute (maintenance and repair with no appointment necessary) and Renault Rapide Bodycare (bumper scuffs, dings and dents, windscreen, stone chips and interior repairs...) services deliver the highest level of repair and maintenance and offer a full year's guarantee on Original Renault Parts. And don't forget to have a look at our wide range of additional equipment and accessories!

RENAULT INSURANCE

A car as well designed as your Renault deserves an insurance policy to match. Renault Insurance has been specifically created to provide superb protection for you and your car.*** In addition to a very competitive premium, Renault Insurance also includes:

Renault Genuine parts fitted in Renault Accident Repair Centres, protecting your 12 year anti-corrosion warranty; repairs guaranteed for 3 years; a courtesy car for the duration of any repairs subject to availability when you use an approved repairer; payment by instalments - subject to status.

Lines open 8am – 8pm weekdays, 9am – 2pm Saturdays. Calls may be recorded.

All quotes are based on individual circumstance and subject to insurers underwriting criteria. Renault Insurance is arranged and administered by Equity Direct Broking Limited, which is authorised and regulated by the Financial Services Authority. Registered Office: Library House, New Road, Brentwood, Essex, CM14 4GD. Registered in England & Wales No. 6710272.

† 100,000 miles for Laguna and Espace.

* Up to build date 23 April 2010, service intervals are 12,000 miles / 2 years

** Up to build date 30 May 2010, service intervals are 12,000 miles / 2 years

*** Note: this does not apply to vans or Renaultsport cars

CUSTOMER SERVICES

Renault knows the value of communicating with its customers and we have established effective ways to keep in touch with you. If after speaking to your local Renault dealership you are not completely satisfied, please contact the Renault UK Customer Service Department on 0800 072 3372 (Mon-Fri 9.00am to 5.30pm).

You can also visit our website www.renault.co.uk Or write to us at: **Renault UK Ltd, The Rivers Office Park, Denham Way, Maple Cross, Rickmansworth, Hertfordshire, WD3 9YS.**

Find out more about your vehicle at www.e-guide.renault.com



WHY RENAULT? WE'RE DRIVEN BY A PASSION TO MEET AND EXCEED PEOPLE'S NEEDS, AND THAT'S WHAT DRIVES THE INDUSTRY FORWARD. IT'S BEEN THAT WAY WITH US FOR OVER A HUNDRED YEARS. BUT IN TODAY'S RAPIDLY-CHANGING ENVIRONMENT, IT'S MORE IMPORTANT THAN EVER THAT WE SOURCE NEW SOLUTIONS THAT WILL SAFEGUARD ALL OUR FUTURES.

We know that the car is at a turning point, it has to evolve whether you believe in global warming or not; to emit less in cities, to make less noise and to use increasingly scarce energy more efficiently.

At Renault we are working to create more affordable cars, with radically lower CO₂ emissions. For the widest possible audience. Today that's our collection of 35 'eco²' models. Eco² indicates that the vehicle produces CO₂ emissions lower than 140 g/km, it includes at least 5% recycled plastic in its plastic mass, and has been designed in such a way that 95% of the materials used could have a second life (recyclable for other use or as a source of energy). In addition eco² means that our factories are ISO 14001 certified.

Starting next year there will be a groundbreaking range of electric vehicles, from a nippy town car to a comfortable family saloon and a small van. They will be affordable to run – you will be able to drive up to 100 miles using a battery that costs typically £3 to charge, and a lot less using cheaper tariffs. And parking and congestion charges should all be lower, too.

We believe it's time to make the car a driver of progress once more. We are determined to drive that change. Soon you will be able to join us.

RENAULT. DRIVE THE CHANGE.



**WITH RENAULT SCENIC AND GRAND SCENIC,
LIFE IS EASY. A WELCOMING, COMFORTABLE
INTERIOR. INTELLIGENT TECHNOLOGY
WITHIN EVERYONE'S REACH.
RESPONSIVE, AND A PLEASURE TO DRIVE.**



PLENTY OF SPACE, FRONT AND BACK



Scenic and Grand Scenic: comfortable, spacious and adaptable. The Scenic and Grand Scenic offer huge interior space, in addition to sliding seats, comfortable headrests, reclining seat backs, and passenger seats which fold to create tables... helping to make life easier for you and your passengers. And in the Grand Scenic, the second row passengers enjoy best-in-class legroom of 275 mm. Move into the back row and you have 842 mm headroom (again, best-in-class) and generous legroom.



AN INNOVATIVE CABIN

Renault has always designed easy-living interiors, designed to meet the needs of you and your passengers. The Scénic and Grand Scénic are no exception, offering up to 82 litres of internal storage, which puts them at the top of their class. You'll also find more than 40 storage solutions and adaptability to suite all your needs. Each passenger has practical and accessible storage to hand: under-seat drawers and under-floor storage in the first two rows, a refrigerated glove box, sliding central storage, cup holders, door storage, seat-back pockets, etc. Toys, magazines and electronic devices can be easily stowed away. And stowed wherever you choose!



ADAPTABILITY - SCENIC 5 SEAT

The Scénic offers up to 555 litres* of load volume (1,837 litres* with the seats removed), and five separate seats. Fold and unfold the seats as you need them - it's so simple. Impromptu weekends away, a big shop... with a 2.5m load length with the passenger seat folded into a table, it will all fit in!



* According to ISO 3832.



ADAPTABILITY - GRAND SCENIC 7 SEAT

The Grand Scénic's boot is extremely generous. It offers up to 702 litres*, or 2,050 litres* with the seats removed. As for the load length, that's 2.76m with the passenger seat folded into a table. Travel with family, friends or large loads... Grand Scénic can adapt to all your needs.



PRACTICAL TECHNOLOGY

Scénic and Grand Scénic: the best of technology. With the Carminat TomTom® Live navigation system, you'll travel with complete confidence. Fun and simple to use, it guarantees continuity in navigation (even if the GPS signal is lost) indicates speed limits, gives live traffic updates and even has a Google search facility. And because it's integrated perfectly into your dashboard, there's no risk of theft. Also on the dashboard is a real computer screen thanks to TFT (Thin Film Transistor): a more rich and readable colour screen that displays the right information, at the right time. Because it's not always easy to manoeuvre in the city, the Scénic and Grand Scénic combine one audio system and two visual systems* to assist with parking. The successive beeps of the radar indicate the presence of an obstacle and are linked to an illustration to help with perfect positioning. The reversing camera on a colour screen allows for even more precise manoeuvres.

* Depending on version



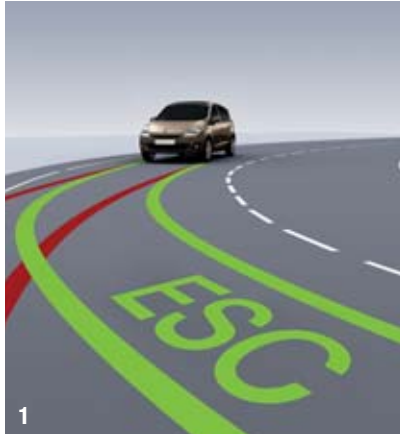


A WIDE CHOICE OF ENGINES

Exceptional road holding for true driving pleasure: equipped with symmetrical front and rear tracks, the Scenic offers unrivalled balance and directional stability. With reduced bodyroll, it maintains comfort and precision, both when cornering and in the wet. All engines offer reduced fuel consumption and emissions, to help both your pocket and the environment. Three automatic transmissions are available. The new dual-clutch EDC gearbox, linked to a dCi 110 engine, combines responsiveness and lower fuel consumption. The CVT gearbox is mated with the 2.0 16V 140 engine.



SAFETY/TECHNOLOGY



1. ESC (ELECTRONIC STABILITY CONTROL)

With ASR traction control and the CSV understeer control function, your vehicle's stability is taken care of in difficult road conditions.

2. ABS WITH EBD (ELECTRONIC BRAKE DISTRIBUTION)

Linked to the Brake Assist, it allows for trajectory control.

3. AIRBAG SYSTEM

Includes a full range of airbags and side impact sensors. The airbags are anti-submerging in the front and rear seats to allow you to travel in greater safety.



3

4. RENAULT HANDS FREE KEYCARD

Simply carry the card with you. You can open the doors and start the ignition without even having to insert the card into the reader. Move away from your vehicle and the doors lock automatically.

5. MULTI-FUNCTIONAL TUNEPPOINT

Connect your MP3 player using the USB and iPod sockets and control the system through the steering wheel controls.

6. RADIOSAT CLASSIC BLUETOOTH® 3D SOUND BY ARKAMYS

The digital sound processing, customised by Arkamys for the Scenic, allows the eight 140W speakers to recreate great quality sound in three dimensions. Listening can be adapted with "driver only" or "silence when stopped" functions.

7. SUNROOF

The large electric sunroof allows as much light as possible into the interior.



4



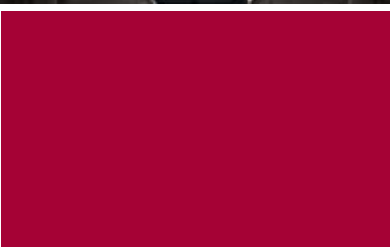
5



6



7



ACCESSORIES



1



2



3



4

PROTECTION AND COMFORT

Keep you and your Renault safe and sound. Protection and safety are number one priorities for Renault. Renault Accessories has developed a range of products that will help keep you and your car in complete safety.

1. MATS

Mats are an essential accessory to protect your car from everyday dirt and debris. Designed to fit perfectly into your Scenic, the inbuilt stud fixings ensure they fit safely with no slipping.

2. BOOT LINER

This convenient boot liner protects your boot from day to day wear and tear. It's designed to fit perfectly into the boot of your Scenic and is made from semi-rigid plastic so it can be easily washed down.

3. PARKING SENSORS

This clever system detects objects behind your vehicle as well as making parking in the smallest spaces so much easier. Ultrasonic sensors in the bumper emit a beep and as objects get closer, the sound becomes louder and more frequent.

4. CHILD SEATS

Children are most vulnerable, so their safety is of the highest importance to Renault. Your Scenic is equipped to fit ISOFIX child seats so you can relax knowing that your children are secure and comfortable in their Duo Plus seat, watching the world go by.

TOURING

You, your Renault and the kitchen sink. Planning ahead to your holidays? Renault Accessories has developed a range of accessories to maximise the load carrying capacity of your Scenic.

5. ROOF BARS, SKI RACK, BIKE RACK

Whether you are planning a ski trip or just a day out with the bikes, we have an accessory for you. Designed to work in harmony with your car, these aluminium Touring Line roof bars are lightweight and easy to mount. Our bike racks can be mounted on the roof or a tow bar. They are City Crash tested to ensure maximum safety and security.

6. ROOF BOX

Going on holiday and need to pack the kitchen sink? Our range of Touring Line roof boxes are the ideal way of increasing your boot space. They are lockable and are designed to perfectly fit the Renault Touring Line Roof Bars.

7. TOW BAR

Whether you need to pull a trailer, a caravan or simply mount one of our bike racks, Renault has the tow bar for you.

TECHNOLOGY

Cutting edge technology in your Renault.

8. DVD SYSTEM

"Are we nearly there yet?" Boredom on long journeys is a thing of the past a thing of the past with our DVD player. Mounted onto the back of the headrest, it provides hours of entertainment for the rear passengers. Comes with two screens and infra red headphones.



5



6



7



8

TRIMS



EXPRESSION

Comfort and well-being.

For “made to measure” comfort, the driver’s seat and the front headrests have multiple settings. The interior has dark ‘Erevan’ upholstery.



DYNAMIQUE TOMTOM

Sportiness and practicality.

Leather charcoal grey steering wheel, chrome effect door handles and dashboard with multifunction TFT colour screen. The upholstery is available in dark charcoal cloth or optional dark grey leather.



EQUIPMENT

<p>SAFETY AND SECURITY</p> <ul style="list-style-type: none"> • ABS with EBD (Electronic Brake Distribution) and Brake Assist • ASR (traction control) • CSV (understeer control) • Deactivation of front passenger airbag • Deadlocking and engine immobiliser • Driver's double seatbelt pretensioners • Driver and front passenger two stage auto-adaptive airbags • ESC (Electronic Stability Control) • Front lateral airbags • Front and rear curtain airbags 	<ul style="list-style-type: none"> • Height adjustable front and rear headrests • Insurance approved engine immobiliser (Thatcham category 2) • ISOFIX points on three second row seats • R.A.I.D. (Renault Anti Intruder Device) automatic door locking <p>COMFORT, DRIVING AND VERSATILITY</p> <ul style="list-style-type: none"> • Body coloured door mirrors and bumpers • Double optic headlights • Electric / heated door mirrors • Front and rear underfloor storage 	<ul style="list-style-type: none"> • Height adjustable driver's seat • Height and reach adjustable steering wheel • Keyless car with Renault card • Power steering • Remote control central locking • 'See me Home' headlights • Storage trays under front seats • TFT screen dashboard display • Tinted windows • Trip computer • Tyre inflation kit
CORE FEATURES		
<p>EXPRESSION - ADDITIONAL EQUIPMENT TO CORE FEATURES</p> <ul style="list-style-type: none"> • Design wheels - 16" 'Surround' with a dark metallic finish • 4 x 15W radio CD with fingertip remote control • 12V power socket in boot area • Aux input in front of gear lever • Automatic parking brake 	<ul style="list-style-type: none"> • Aviation tables on rear of front seats • Body coloured side protection mouldings • Cruise control • Driver's seat lumbar adjustment • Folding passenger seat • Insurance approved alarm (Thatcham category 1) • Manual air conditioning 	<ul style="list-style-type: none"> • Pockets on rear of front seats • Speed limiter • Upholstery - Dark Carbon 'Erevan' cloth • Windows - front and rear electric with anti-pinch facility
EXPRESSION		
<p>DYNAMIQUE TOMTOM - ADDITIONAL EQUIPMENT TO EXPRESSION (INCLUDES CORE FEATURES ABOVE)</p> <ul style="list-style-type: none"> • Alloy wheels - 16" 'Sport' • Automatic headlights • Automatic rain sensitive windscreen wipers • Bluetooth connectivity • Carminat TomTom Live navigation system with remote control • Child minder mirror 	<ul style="list-style-type: none"> • Dashboard trims in high gloss piano black • Keycard - hands free • Multi-functional TunePoint • Seats - height adjustable front passenger seat • Steering wheel - leather • Sunblinds - on second row rear windows • Upholstery - Dark Carbon sport style with contrast stitching and TEFLON protection • Windows - extra tinted rear and tailgate 	
DYNAMIQUE TOMTOM		

COLOURS



It should be noted that printing limitations do not permit these subtle paintwork shades to be shown with absolute accuracy. Only personal inspection of the Scénic at your local Renault Dealer will reveal it in its true colours. From time to time changes are made to the colour range. Please check availability with your local Renault Dealer.

TRIM	COLOURS													
	Glacier White 369 (NM)	Pacific Blue 460 (NM)	Mercury D69 (MI)	Oyster Grey KNG (MI)	Eclipse B66 (MI)	Diamond Black GNE (MI)	Stone HNK (MI)	Quartz D11 (MI)	Ruby Red NNJ (MI)	Extreme Blue RNA (MI)	Opal Blue RPA (MI)	Mocha CNB (MI)	Arctic White QNC (MI)	
EXPRESSION	●	●	○	○	○	○	○	○	○	○	○	○	○	
DYNAMIQUE TOMTOM	●	●	○	○	○	○	○	○	○	○	○	○	○	
● : Standard ○ : Optional - : Not available														
NM : Non-metallic Supergloss; MI : Metallic Illusion														

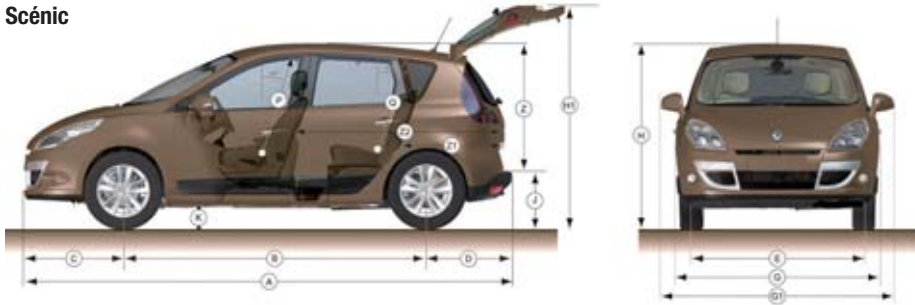
WHEELS



1. 16" 'SURROUND' DESIGN WHEELS
2. 16" 'SPORT' ALLOY WHEELS
3. 17" 'SCHUSS' ALLOY WHEELS

DIMENSIONS

Scénic



Grand Scénic



	Scénic 5 seat	Grand Scénic 7 seat
Boot (ISO3832) with 2 nd row seats in place (dm³)	437 to 522	564 to 702
Boot (ISO3832) with 3 rd row seats in place (dm³)	-	208
Boot (ISO3832) with 3 rd row seats folded under boot cover (dm³)	1637	2063
Boot (ISO3832) without 3 rd row seats folded under boot cover (dm³)	1837	1863
A - Wheelbase	2702	2770
B - Overall length	4344	4560
C - Front overhang	885	885
D - Rear overhang	757	905
E - Front track	1545	1536
F - Rear track	1547	1539
G - Overall width with door mirrors folded	1845	1845
G1 - Overall width with door mirrors extended	2077	2077
H - Unladen height	1637	1645
H - Unladen height with roof luggage rack	1737	1744
H1 - Height with hatch/tailgate open	1998	1984
J - Unladen sill height	602	614
K - Ground clearance, laden	> 120	> 120
M - Front elbow width	1486	1478
M1 - Rear elbow width - second row	1475	1474
M2 - Rear elbow width - third row	-	1308
N - Front shoulder width	1445	1445
N1 - Rear shoulder width - second row	1436	1433
N2 - Rear shoulder width - third row	-	1208
P - Front seat headroom at 14°	968	968
Q - Rear seat headroom at 14° - second row	901	908
Q - Rear seat headroom at 14° with TO - second row	-	868
R - Rear seat headroom at 14° - third row	-	842
Y - Upper width of boot opening	980	925
Max width of boot opening	1092	1059
Y1 - Lower width of boot opening	975	1010
Y2 - Width between wheel housing	1105	1105
Z - Height of boot opening	858	845
Z1 - Maximum load length behind second row (seats in place)	847 / 977	1273
Z2 - Maximum load length behind driver's seat (seats down)	1680	1900
Z3 - Maximum load length with passenger's seat as shelf (seats down)	2508	2756
Z4 - Maximum load length, behind third row (seats in place)	-	416
Height under shelf	550	510

TECHNICAL SPECIFICATIONS

ENGINE	1.6 VVT 110		1.4 TCe 130		2.0 VVT 140 CVT		1.5 dCi 110 FAP		1.5 dCi 110 EDC Auto FAP		1.9 dCi 130 FAP	
BODY TYPE	Scénic	Grand Scénic	Scénic	Grand Scénic	Scénic	Grand Scénic	Scénic	Grand Scénic	Scénic	Grand Scénic	Scénic	Grand Scénic
Body Type Classification	Scénic											
ENGINE CHARACTERISTICS	Scénic											
Emissions conformance	Euro 5	Euro 5	Euro 5	Euro 5	Euro 5	Euro 5	Euro 5	Euro 5	Euro 5	Euro 5	Euro 5	Euro 5
With particle filter (FAP)	-	-	-	-	-	-	FAP	FAP	FAP	FAP	FAP	FAP
Induction capacity	(cc)	1598	1598	1397	1397	1997	1197	1461	1461	1461	1461	1870
Bore x stroke	(mm)	79.5 x 80.5	79.5 x 80.5	78.0 x 73.1	78.0 x 73.1	84.0 x 90.1	84.0 x 90.1	76.0 x 80.5	76.0 x 80.5	76.0 x 80.5	76.0 x 80.5	80.0 x 93.0
Compression ratio		9.7 : 1	9.7 : 1	9.1 : 1	9.1 : 1	10.2 : 1	10.2 : 1	15.2 : 1	15.2 : 1	15.2 : 1	15.2 : 1	16.6 : 1
Maximum power	(kw ISO)	81	81	96	96	102	102	81	81	81	81	96
	(hp DIN)	110	110	130	130	140	140	110	110	110	110	130
	(rpm)	6000	6000	5500	5500	6000	6000	4000	4000	4000	4000	3750
Maximum torque	(Nm ISO)	151	151	190	190	195	195	240	240	240	240	300
	(rpm)	4250	4250	2250	2250	3750	3750	1750	1750	1750	1750	1750
Fuel type		Petrol	Petrol	Petrol	Petrol	Petrol	Petrol	Diesel	Diesel	Diesel	Diesel	Diesel
Injection type		Multipoint	Multipoint	Multipoint	Multipoint	Multipoint	Multipoint	Commonrail Direct Injection	Commonrail Direct Injection	Commonrail Direct Injection	Commonrail Direct Injection	Commonrail Direct Injection
Number of cylinders		4	4	4	4	4	4	4	4	4	4	4
Number of valves		16	16	16	16	16	16	8	8	8	8	8
WEIGHTS												
Maximum (driver only) towing weight braked	(kg)	1300	1300	1300	1300	1300	1300	1300	1300	1300	1300	1300
	(lb)	2866	2866	2866	2866	2866	2866	2866	2866	2866	2866	2866
Kerb weight (will vary depending on version / equipment)	(kg)	1320	1444	1320	1457	1428	1505	1385	1430	1523	1430	1540
	(lb)	2910	3183	2910	3212	3148	3318	3053	3153	3358	3153	3395
GEARBOX												
Number of forward gears		6	6	6	6	CVT (6)	CVT (6)	6	6	6	6	6
Manua l/Automatic		Manual	Manual	Manual	Manual	CVT	CVT	Manual	Manual	EDC (Auto)	EDC (Auto)	Manual
Vehicle speeds (mph) @ 1.000 rpm		1 st	4.21	4.21	4.21	4.21	4.89	4.89	4.83	4.73	4.37	5.26
		2 nd	7.46	7.46	7.46	7.46	-	-	9.25	9.05	7.60	9.76
		3 rd	10.81	10.81	10.81	10.81	-	-	13.62	13.33	11.69	14.29
		4 th	14.09	14.09	14.46	14.46	-	-	18.47	18.08	16.61	18.98
		5 th	17.17	17.17	18.01	18.01	-	-	23.61	23.10	22.28	24.51
		6 th	21.46	21.46	21.46	21.46	32.93	29.17	28.22	28.77	28.77	29.21
BRAKING SYSTEM												
ABS		Standard	Standard	Standard	Standard	Standard	Standard	Standard	Standard	Standard	Standard	Standard
Front Ø / width	(mm)	DV 280	DV 296	DV 296	DV 296	DV 296	DV 296	DV 296	DV 296	DV 296	DV 296	DV 296
Rear Ø / width	(mm)	DP 260	DP 274	DP 260	DP 274	DP 260	DP 274	DP 260	DP 274	DP 260	DP 274	DP 274
SUSPENSION												
Front / rear												
Front anti-roll bar Ø	(mm)	25.2	26.5	25.2	26.5	25.2	26.5	25.2	26.5	25.2	26.5	25.2
Rear anti-roll bar Ø	(mm)	25.2	26.5	25.2	26.5	25.2	26.5	25.2	26.5	25.2	26.5	25.2
STEERING												
Power assisted												
Turning circle between kerbs	(m)	11.05	11.29	11.05	11.29	11.05	11.29	11.05	11.29	11.05	11.29	11.05
WHEELS AND TYRES												
Standard wheel size	(inches)	15 / 16 / 17	16 / 17	16 / 17	16 / 17	16 / 17	16 / 17	16 / 17	16 / 17	16 / 17	16 / 17	16 / 17
Reference wheels		6.5 J 15	6.5 J 16	6.5 J 16	6.5 J 16	6.5 J 16	6.5 J 16	6.5 J 16	6.5 J 16	6.5 J 16	6.5 J 16	6.5 J 16
Reference tyres		205/60 R16	205/60 R16	205/60 R16	205/60 R16	205/60 R16	205/60 R16	205/60 R16	205/60 R16	205/60 R16	205/60 R16	-
EXPRESSION		92H	96H	92H	96H	92H	96H	92H	96H	92H	96H	-
DYNAMIQUE TOMTOM		205/60 R16	205/60 R16	205/60 R16	205/60 R16	205/60 R16	205/60 R16	205/60 R16	205/60 R16	205/60 R16	205/60 R16	205/60 R16
DYNAMIQUE TOMTOM (17" alloys)		205/55 R17	205/55 R17	205/55 R17	205/55 R17	205/55 R17	205/55 R17	205/55 R17	205/55 R17	205/55 R17	205/55 R17	205/55 R17
Spare wheel												
CAPACITY												
Fuel tank	litres (gallons)	60 / 13.20										
PERFORMANCE												
SCx (Aerodynamic Coefficient)		0.840	0.820	0.840	0.820	0.840	0.820	0.840	0.820	0.840	0.820	0.840
0-62mph (0-100kph)	(seconds)	11.7	12.6	10.5	11.5	10.6	11.4	12.3	13.3	13.4	14.3	10.6
Maximum speed	(mph (kph))	119 (190)	119 (185)	119 (190)	119 (190)	119 (190)	119 (190)	112 (180)	112 (180)	112 (180)	112 (180)	121 (195)
Standing 1000m	(seconds)	33.5	34.3	31.8	32.7	32.2	33.0	33.8	34.6	34.7	35.1	33.0
50 to 75 mph in 5 th / 6 th gears		14.9 / 20.3	15.0 / 22.2	11.3 / 14.4	12.3 / 15.7	8.5	9.1	11.3 / 14.1	12.3 / 15.4	10.5	11.3	9.8 / 12.3
EMISSIONS												
CO ₂	(g/km)	174	178	168	170	186	186	128	128	130	130	145
FUEL CONSUMPTION												
Urban Cycle	(mpg)	28.0	27.2	28.8	28.5	25.9	25.9	48.7	48.7	47.9	47.9	42.8
	(litres/100km)	10.1	10.4	9.8	9.9	10.9	10.9	5.8	5.8	5.9	5.9	6.6
Extra Urban Cycle	(mpg)	47.9	45.6	47.9	47.9	43.5	43.5	64.2	64.2	62.8	62.8	57.6
	(litres/100km)	5.9	6.2	5.9	5.9	6.5	6.5	4.4	4.4	4.5	4.5	4.9
Combined Cycle	(mpg)	38.2	36.7	38.7	38.2	34.9	34.9	57.6	57.6	56.5	56.5	51.4
	(litres/100km)	7.4	7.7	7.3	7.4	8.1	8.1	4.9	4.9	5.0	5.0	5.5
SERVICING INTERVALS												
Oil change interval in miles / 2 years (whichever is the sooner)		18 000										
CO ₂ , benefit in kind and mpg figures may vary according to optional equipment												



Scénic meets three criteria:

- the vehicle produces CO₂ emissions lower than 140g / km or operates on biofuels.
- It is manufactured in an ISO 14001 certified factory, minimising its environmental impact,
- and it includes at least 5% recycled plastic in its plastic mass.

With , Renault displays its environmental commitment at every stage of the life cycle of the vehicle. The vehicle has been designed in such a way that 85% of the materials used could have a second life (recyclable for other use or as a source of energy), and that pollution control at the end of the vehicle's life (in particular extraction of fluids) is made easier.

EQUIPMENT AND OPTIONS

	Expression	Dynamique TomTom
SAFETY		
Active and Passive Safety Features		
ABS with EBD (Electronic Brake Distribution) and Brake Assist	●	●
ASR traction control	●	●
CSV understeer control	●	●
Deactivation of front passenger airbag	●	●
Front and rear curtain airbags	●	●
Driver and front passenger two stage auto-adaptive airbags	●	●
ESC (Electronic Stability Control)	●	●
Front and rear headrests with height adjustment	●	●
Front lateral airbags	●	●
Height adjustable front seatbelts	●	●
ISOFIX child seat mounting points on three second row seats	●	●
R.A.I.D. (Renault Anti Intruder Device) with automatic door locking	●	●
Three point seatbelts fitted to all front and rear seats	●	●
Five adaptable headrests for front and second row seats	P2	P2
See and Be Seen Visibility Features		
Automatic headlights	P3	●
Double optic headlights	●	●
"See Me Home" headlights	●	●
Bi-Xenon headlights with headlight washers	-	○
Front fog lights	●	●
Automatic rain sensitive windscreen wipers	P3	●
Electrically adjustable, heated and folding door mirrors (wide angle on driver's side)	P3	○
Electrically heated and adjustable door mirrors (wide angle on driver's side)	●	●
Heated rear windscreen	●	●
Vehicle security		
Insurance approved engine immobiliser (Thatcham category 2)	●	●
Insurance approved alarm system (Thatcham category 1)	●	●
Remote control central locking	●	●
Renault keycard	●	-
Renault hands free keycard	-	●
Deadlocking	●	●
EXTERIOR FEATURES		
Exterior Styling		
15" 'Sequence' wheel trims - dark metallic finish	-	-
16" 'Surround' design wheels in a dark metallic finish	●	-
16" 'Sport' alloy wheels	-	●
17" 'Schuss' alloy wheels	-	○
Body coloured door mirrors	●	●
Body coloured exterior door handles	●	-
Dark metal exterior door handles	P3	-
Satin chrome exterior door handles	-	●
Black side protection mouldings	-	●
Body coloured side protection mouldings	●	●
Metallic paint	○	○
Renault i.d. metallic paint	○	○
COMFORT AND CONVENIENCE		
Driving Technology		
Cruise control	●	●
Speed limiter	●	●
Rear parking sensors	○	○
Electronic automatic parking brake	●	●
Height and reach adjustable steering wheel	●	●
Leather steering wheel	-	●
Leather gearknob	●	-
TFT screen dashboard display featuring menu configuration	●	●
Tyre inflation kit	●	●
Emergency spare wheel	○	○

	Expression	Dynamique TomTom
Windows and Blinds		
Electric front windows - driver's with "one-touch" facility	●	●
Electric rear windows	●	●
Extra tinted rear windows and tailgate	○	●
Electric panoramic sunroof with sunblind	○	○
Sunblinds on second row rear windows	P6	●
Ventilation		
Air conditioning	●	●
Automatic Dual-Zone climate control (left and right front controls) with carbon and odour filter	-	○
Rear lateral air vents	-	●
Pollen filter	●	●
Seating, Carpet Mats and Interior Styling		
Height adjustable driver's seat	●	●
Driver's seat with lumbar adjustment	●	●
Electrically adjustable driver' seat with memory facility	-	●
Passenger seat with height adjustment	-	●
Folding passenger seat	●	●
Front heated seats	-	P5
Second row - three individual seats which slide forwards / backwards and fold in half	●	●
Third row - two seats which fold flat into the floor (Grand versions only)	●	●
Dark Carbon cloth upholstery	-	-
Erevan cloth upholstery	●	-
Dark Carbon sport style with contrast stitching upholstery	-	●
Upholstery with TEFLON protection	-	●
Dark Carbon leather upholstery	-	P5
Storage and functional features		
Sliding centre console / storage unit	○ / P2	○ / P2
Storage pockets on rear of front seats	●	●
Aviation tables on rear of front seats	●	●
Storage trays under front seats	●	●
Front and rear underfloor storage	●	●
12 volt power point located in row two	●	●
12 volt power point located in boot	●	●
Interior convenience and lighting		
Front and rear centre lighting	●	●
Driver and passenger reading spotlights	P6	●
Rear reading spotlights	P6	●
Glovebox and boot courtesy lights	●	●
Footwell lighting	P6	●
Sun visors - driver and passenger with vanity mirror	●	●
Child minder mirror	P6	●
In-car Entertainment and Communication		
Dashboard display - TFT screen	●	●
Fingertip control audio system	●	●
4 x 15W RadioSat Classic RDS radio CD	●	-
4 x 15W RadioSat Classic RDS radio CD with Bluetooth connectivity	-	-
4 x 15W RadioSat Classic RDS radio CD with Bluetooth connectivity and multi-functional TunePoint	-	●
4 x 30W 3D Arkamys RDS radio CD with Bluetooth connectivity and multi-functional TunePoint	○ / P4	○
Carminat TomTom Live navigation system (UK map) with remote control (1)	P4	●
Carminat TomTom Western European mapping upgrade	-	○
OPTION PACKS		
P2 - Convenience Pack: Sliding centre console, front and rear parking sensors, adaptable headrests for front and second row seats	○	○
P3 - City Pack: Automatic headlights, automatic wipers, hands free keycard, electric folding door mirrors	○	-
P4 - Technology Pack: Carminat TomTom Live navigation system and 4 x 30W 3D Arkamys RDS radio CD with Bluetooth connectivity / multi-functional TunePoint	○	-
P5 - Leather Pack: Dark Carbon leather seats, electrically adjustable driver's seat with memory facility, heated front seats	-	○
P6 - Family Pack: Sunblinds on second row rear windows, child minder mirror, footwell lighting, front and rear reading spotlights	○	-

● Standard ○ Option (stand-alone) - Not available P Available as part of a Pack (number denotes pack) * Not available with 1.6 VWT 110 engine

(1) With joystick control when Sliding console / storage unit is ordered

RENAULT GRAND SCENIC & SCENIC



(Enter Renault's world at Sky Guide 883 and www.renault.tv)

Although every effort has been made to ensure that the information contained within this brochure is as accurate and up to date as possible, Renault U.K. reserves the right to modify its models without notice, including their characteristics, specifications, equipment and accessories. Brochures inevitably become out of date or inaccurate in some respects, in that such characteristics, specifications, equipment, or accessories may be changed after the publication date given below and can differ from the descriptions given. It is therefore necessary to check with your Renault Dealer before purchasing any product that the characteristics, specifications, equipment or accessories of the vehicle on order are as advertised. Publication date January 2011.